

Belden 2183P and 2183R cables were designed specifically for optimal performance in 4K HDBaseT transmission. These shielded cables deliver 4K content over 100 meters in a unique, small, sleek design. Combined with either standard field-mount plugs or Belden's new REVConnect connectivity system, it is the easiest to install, most reliable HDBaseT cabling solution available!

Construction	Other
4 twisted pairs F/UTP	UL Temperature: 90°C
23 AWG solid bare copper conductors	UL-LP rated to 0.6A per conductor
Overall corrugated flex shield	Pull Tension: 45 lbs; 200.2 N
Tinned copper helical drain wire	Tested to 500 MHz
Rip cord	



BENEFITS

- Up to 25% smaller than Category 7a
- Easy to bend and fit into small spaces
- Resistant to rigors of installation with Bonded-Pair, durable shield and helical drain
- Designed and tested specifically for optimal 4K UHD performance



FEATURES

- 100% shielding provides protection from noise interference with AV signal
- Single overall shield construction saves significant termination time
- UL Limited Power (LP) rated to 0.6A per conductor
- Interoperable with leading manufacturers' AV equipment



KEY APPLICATIONS

- HDBaseT 4K UHD 100 meters
- Supports HDBaseT 5Play™*
- 100W Power over HDBaseT (PoH) and Power over Ethernet (PoE)
- **2183P** rated CMP for plenum installations
- **2183R** rated CMR for riser and other non-plenum installations

*5Play is a registered Trademark of HDBaseT Alliance

Reduce Installation Time and Costs by Combining with REVConnect Connectivity System

Flawless 4K

Provides crisp and accurate signal transmission

Reduce Rework

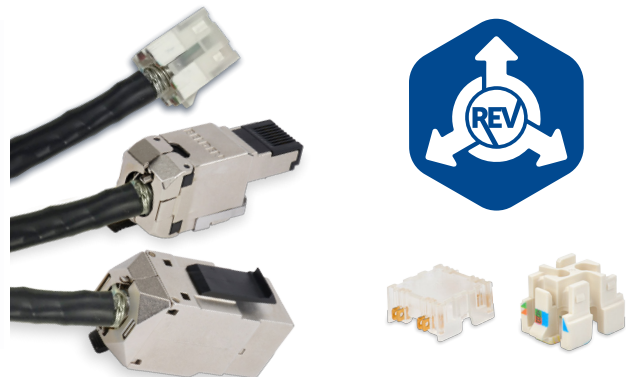
Reliable termination proven to increase first pass yields

Saves Money

Up to twice as fast to terminate than other category cables with standard field-mount plugs

Saves Time

No Bonded-Pair separation required



For more information visit
info.belden.com/hdbaset
or call **1.800.BELDEN.1**

ORDERING INFORMATION

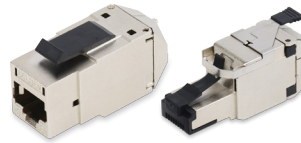
4K Ultra-High-Definition Media Cable

Description	Nom. Diameter		Bend Radius		Bulk Cable Weight		Flame Rating	Length/ Packaging	Belden Part Number		
	Inches	mm	Inches	mm	lbs/1000 ft	kg/km			Blue	White	Black
Plenum, CMP, Solid FEP Insulation, Flammarrest® Jacket	0.260	6.6	1.0	25.4	36	53.6	FT6	1000 ft Reel-in-a-box	2183P D15A1000	2183P 009A1000	2183P 010A1000
Plenum, CMP, Solid FEP Insulation, Flammarrest® Jacket	0.260	6.6	1.0	25.4	36	53.6	FT6	250 ft Reel-in-a-box	-	-	2183P 010A250
Plenum, CMP, Solid FEP Insulation, Flammarrest® Jacket	0.260	6.6	1.0	25.4	36	53.6	FT6	1000 ft Reel	-	-	2183P 0101000
Riser, CMR, Solid Polyolefin Insulation, PVC Jacket	0.290	7.4	1.2	30.5	37	55.1	FT4	1000 ft Reel-in-a-box	2183R 006A1000	2183R 009A1000	2183R 010A1000
Riser, CMR, Solid Polyolefin Insulation, PVC Jacket	0.290	7.4	1.2	30.5	37	55.1	FT4	1000 ft Reel	-	-	2813R 0101000

Custom colors available upon request subject to minimum order quantity. Conductor color code: White/Blue & Blue, White/Orange & Orange, White/Green & Green, White/Brown & Brown

REVConnect Shielded Jacks and Plugs

Package Size	Shielded Jacks	Shielded Plugs
Single Pack	RVAMJKSME-S1	RVAFPSME-S1
Bulk Pack (24 Modules)	RVAMJKSME-B24	RVAFPSME-B24



REVConnect Tool and Accessories

Universal Termination Tool	Tool Spare Blade Set	Cable Prep Tool Replacement	Tool Belt Clip	Dust Caps for Jacks	Icons for Jacks	Bulk Pack of REVConnect Cores
RVUTT01	RVUTB01	RVUCT01	RVUTC01	RVUDCXX-B24	RVUICXX-B24	RVUCOEW-B50
Includes tool, cable prep insert, and spare blade set	Optional extra set of blades with Allen key included	Optional cable prep tool replacement insert	Optional belt clip for universal tool	Optional dust caps for all jacks; XX is color code, pack of 24	Optional icons for all jacks; XX is color code, pack of 24	Bulk pack of 50 cable managers and caps

Color codes: AL (almond), BK (black), BL (blue), BR (brown), EW (electric white), GN (green), GY (gray), IV (ivory), OR (orange), PR (purple), RD (red), YL (yellow), TB (TIA blue), TG (TIA green), TN (TIA brown), TO (TIA orange), TP (TIA purple), TR (TIA red), TY (TIA yellow)



Shielded Field-Mount Plug and Tool

Description	Belden Part Number
Shielded Field-Mount Plug T568A/B - Large	CAPFMFL-S1
Parallel Plier	CTPFM01

