

Manual Switches

Solid State Pushbutton

AML11 Series

INCANDESCENT OR NON-LIGHTED DISPLAY



Buttons ordered separately.

Electrical Data	page 11
Buttons	page 30
Lamps and LEDs	page 46
Accessories	pages 44/45
Mounting Dimensions	pages 47/48

FEATURES

- Hall effect reliability.
- Provides low voltage signals that interface with nearly all DC logic level loads.
- 4.5-24 VDC supply voltage.
- Full guard bezel option.
- Lamps can be furnished installed or ordered separately.
- UL recognized.
- Lamp circuit independent of switch circuit.

AML11 ORDER GUIDE

AML11 B

Housing Type

Standard Bezel:

AML11B Square Non-Lighted
AML11C Square 1 Lamp Ckt.
AML11E Rect. Non-Lighted
AML11F Rect. 1 Lamp Ckt.
AML11G Rect. 2 Lamp Ckts.

Full Guard Bezel:

AML11H Square Non-Lighted
AML11J Square 1 Lamp Ckt.
AML11K Rect. Non-Lighted
AML11L Rect. 1 Lamp Ckt.
AML11M Rect. 2 Lamp Ckts.

B

Bezel Color

B
Black

A

Incandescent Lamp Type

A
No Lamp Installed

B
6 V Lamp*

C
14 V Lamp*

E
28 V Lamp*

2

Terminal Type

2
.110 × .020
(Solder or Quick-Connect)

3
.025 × .025
(Printed Circuit, or Push-On)

EA

Circuitry Codes

4.5-24 VDC Sinking

EA
Momentary Action

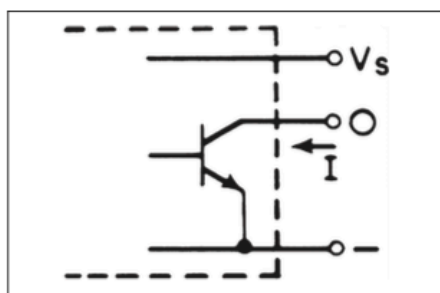
EE
Alternate Action

* Lamps will be installed per each lamp circuit specified in the Housing Type.

Example: AML11BBA2EA

Square pushbutton switch housing, non-lighted; black bezel; .110 × .020 termination; momentary action; current sinking output for use with 4.5 volt supply.

CURRENT SINKING OUTPUT AML10 SERIES



A permanent magnet plunger moves adjacent to the Hall effect integrated circuit to give a digital, current sinking normally high output.