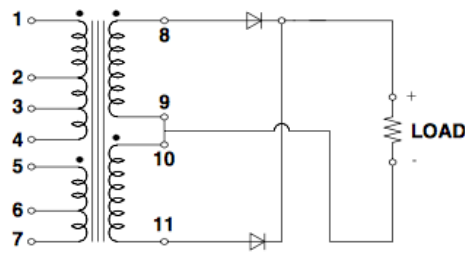
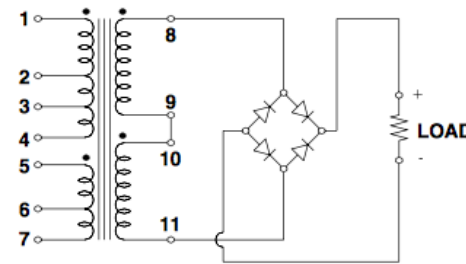


Rectifier Transformers - Terminal Connection Data

**Full Wave C.T.
(center tap)**



Full Wave Bridge



Sec.	STANCOR PART NUMBER	Primary Connections		Full-Wave C.T. Output 4.0 A. D.C.				Full-Wave Bridge Output 2.0 A. D.C.			
				Resistive Load		Capacitive Load		Resistive Load		Capacitive Load	
				Input 117 VAC Term No.	Connect Term. No.	Sec. Volts A.C.	Output Volts D.C.	Sec. Volts A.C.	Output Volts D.C.	Sec. Volts A.C.	Output Volts D.C.
A	RT-402	1-2	-	58.0	25.0	58.0	33.5	58.0	51.5	58.0	72.5
		1-7	2-6	51.0	21.5	51.0	29.0	51.0	45.0	51.0	63.5
		1-6	2-5	45.5	19.0	45.5	25.0	45.5	40.0	45.5	56.0
		1-7	2-5	41.0	17.0	41.0	22.0	41.0	36.0	41.0	50.0
		1-3	-	38.0	15.5	38.0	20.5	38.5	33.5	38.5	46.5
		1-7	3-6	35.0	14.0	35.0	18.5	35.0	30.5	35.0	42.5
		1-6	3-5	32.0	13.0	32.0	16.5	32.0	28.0	32.0	39.0
		1-7	3-5	29.5	12.0	29.5	145.0	30.0	26.0	30.0	36.0
		1-4	-	28.0	11.0	28.0	14.0	28.5	24.5	28.5	33.5
		1-7	4-6	26.0	10.0	26.0	13.0	26.5	22.5	26.5	31.5
		1-6	4-5	24.5	9.5	24.5	12.0	25.0	21.0	25.0	29.0
		1-7	4-5	23.0	9.0	23.0	11.0	23.5	20.0	23.5	27.0
				Full-Wave C.T.				Full-Wave Bridge Output 8.0 A. D.C.			
B	RT-408	1-2	-	-	-	-	-	53.5	44.0	53.0	63.0
		1-7	2-6	-	-	-	-	50.0	40.5	50.0	59.0
		1-6	2-5	-	-	-	-	45.3	37.0	45.0	52.0
		1-7	2-5	-	-	-	-	42.5	34.5	42.0	48.0
		1-3	-	-	-	-	-	37.5	30.5	37.5	40.0
		1-7	3-6	-	-	-	-	35.5	27.5	35.5	39.0
		1-6	3-5	-	-	-	-	32.5	25.0	33.0	35.5
		1-7	3-5	-	-	-	-	31.5	24.0	31.5	31.5
		1-4	-	-	-	-	-	29.0	21.5	29.0	29.5
		1-7	4-6	-	-	-	-	27.5	20.5	27.5	28.0
		1-6	4-5	-	-	-	-	26.0	19.5	26.0	26.0
		1-7	4-5	-	-	-	-	25.0	18.0	25.0	25.0